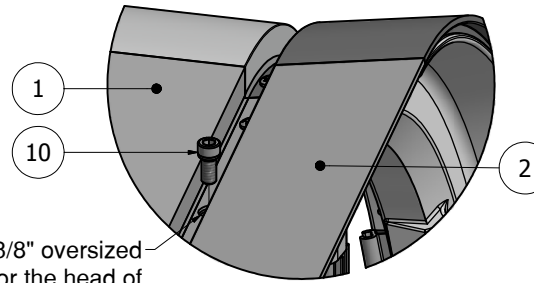


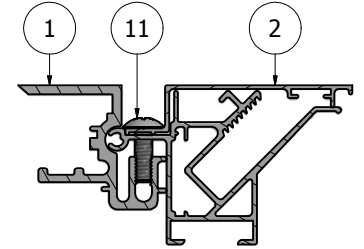
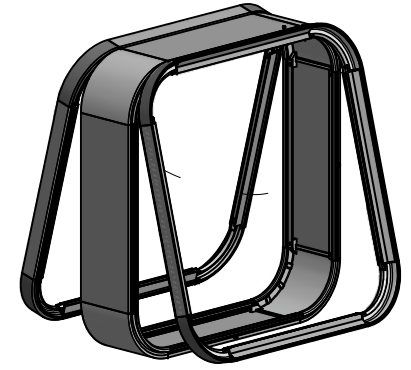
PARTS LIST			
ITEM	PART#	DESCRIPTION	NOTES
1	K2005/4100	Wide Body w/ 9in Radius Corners	Assembly
2	K2085/95/4240	Tension Frame & Bleed Cover w/ 9in Radius Corners & Covers	Assembly
10	5170	Hinge Screw	Drill 3/8" pilot hole
11	5180	Closure Screw	Drill 5/16" pilot hole

Ship To:  
Sales Order#

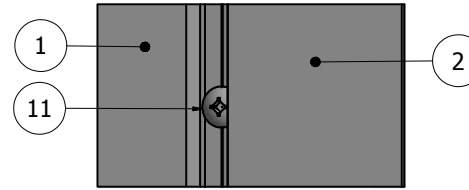
**\*NOTE:** Drill a 3/8" oversized hole for the head of the hinge screw to slip through.



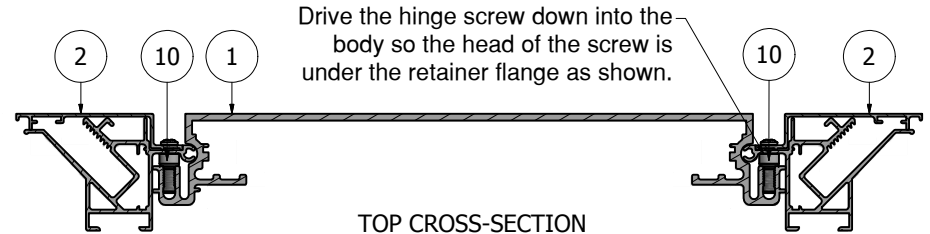
DETAIL A



DETAIL B  
CROSS-SECTION



DETAIL B  
FRAME CLOSED



Drive the hinge screw down into the body so the head of the screw is under the retainer flange as shown.

TOP CROSS-SECTION

**\*NOTE: PRE-CUT KITS ARE NOT PRE-DRILLED.**

(Holes shown in this drawing are for reference only. Drilling of pilot holes are to be done by fabricator.)

**\*NOTE:** IT IS RECOMMENDED THAT THE FRAME BE ASSEMBLED ON THE BODY, THEN RATCHET STRAPPED TO CHECK FOR SQUARE, BEFORE THE FRAME IS WELDED OR MECHANICALLY FASTENED.

THIS DRAWING WAS CREATED AT NO CHARGE TO ASSIST YOU IN VISUALIZING OUR PROPOSAL. THE DRAWING HEREIN IS THE PROPERTY OF SIGNCOMP. PERMISSION TO COPY OR REVISE THIS DRAWING OR TO USE THIS DRAWING FOR PRODUCTION IS STRICTLY PROHIBITED AND CAN ONLY BE COPIED, REVISED OR USED FOR PRODUCTION WITH THE EXPRESSED WRITTEN PERMISSION OF SIGNCOMP.

DRAWING BY:	SBreihof	12/19/2013
Centroid X:	0.000 in	
Centroid Y:	0.000 in	
Principal Moments Ix:	0.000 in <sup>4</sup>	
Principal Moments Iy:	0.000 in <sup>4</sup>	
Section Modulus Ix:	0.000 in <sup>3</sup>	
Section Modulus Iy:	0.000 in <sup>3</sup>	

**SignComp**

TITLE  
Wide Body w/ Tension Frame & Bleed Cover and 9in Radius Corners - Assembly

PART NO  
**KWB/85/95/4520**

Ship To:  
Sales Order#

Caulk the joints where the Radius Diecast Corners and the Extrusion meet, yet making sure the water relief channel is not blocked, allowing for water to flow.

DETAIL B

**\*NOTE:** RADIUS CORNERS ARE DESIGNED TO BE WELDED, HOWEVER CAN ALSO BE MECHANICALLY ASSEMBLED.

DETAIL A

CROSS-SECTION VIEW

**\*NOTE: PRE-CUT KITS ARE NOT PRE-DRILLED.**  
(Holes shown in this drawing are for reference only. Drilling of pilot holes are to be done by fabricator.)

PARTS LIST

ITEM	PART#	DESCRIPTION	NOTES
1	2005	Wide Body	Top & Bottom
2	2005	Wide Body	Sides
3	4100	Wide Body 9in Radius Corner	
65	5218	Radius Corner Screw	Drill 5/32" pilot hole

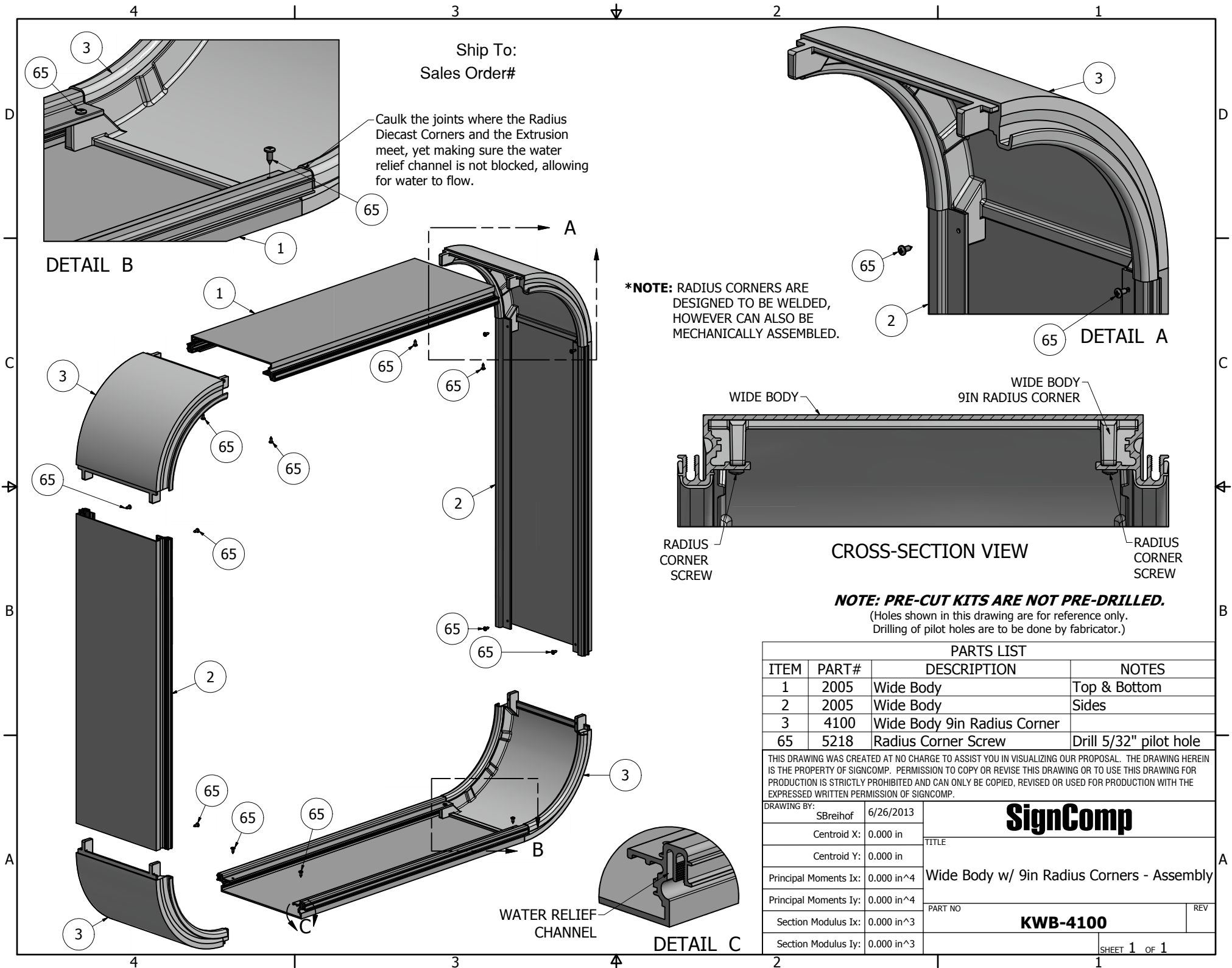
THIS DRAWING WAS CREATED AT NO CHARGE TO ASSIST YOU IN VISUALIZING OUR PROPOSAL. THE DRAWING HEREIN IS THE PROPERTY OF SIGNCOMP. PERMISSION TO COPY OR REVISE THIS DRAWING OR TO USE THIS DRAWING FOR PRODUCTION IS STRICTLY PROHIBITED AND CAN ONLY BE COPIED, REVISED OR USED FOR PRODUCTION WITH THE EXPRESSED WRITTEN PERMISSION OF SIGNCOMP.

DRAWING BY:	SBreihof	6/26/2013
Centroid X:	0.000 in	
Centroid Y:	0.000 in	
Principal Moments Ix:	0.000 in <sup>4</sup>	
Principal Moments Iy:	0.000 in <sup>4</sup>	
Section Modulus Ix:	0.000 in <sup>3</sup>	
Section Modulus Iy:	0.000 in <sup>3</sup>	

**SignComp**

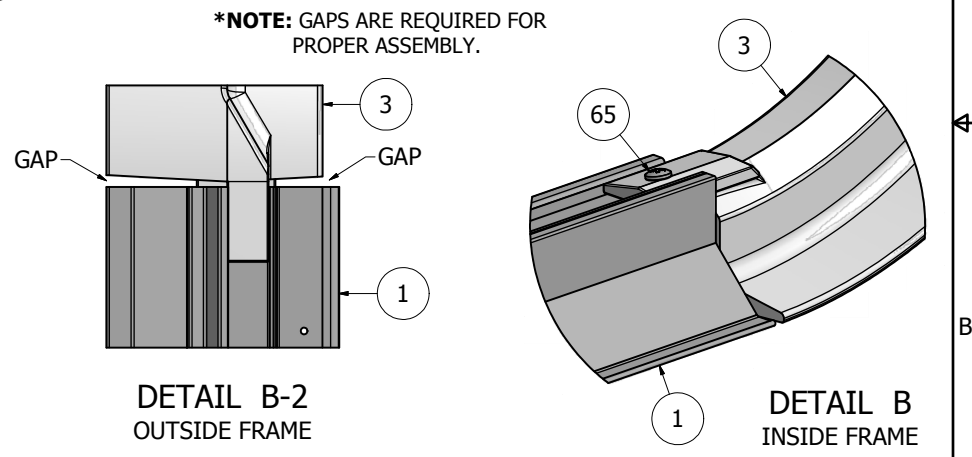
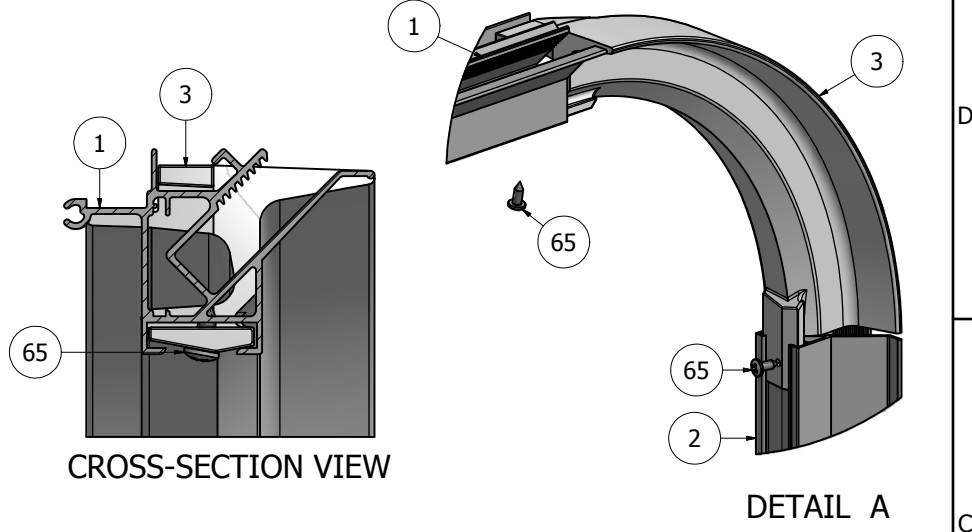
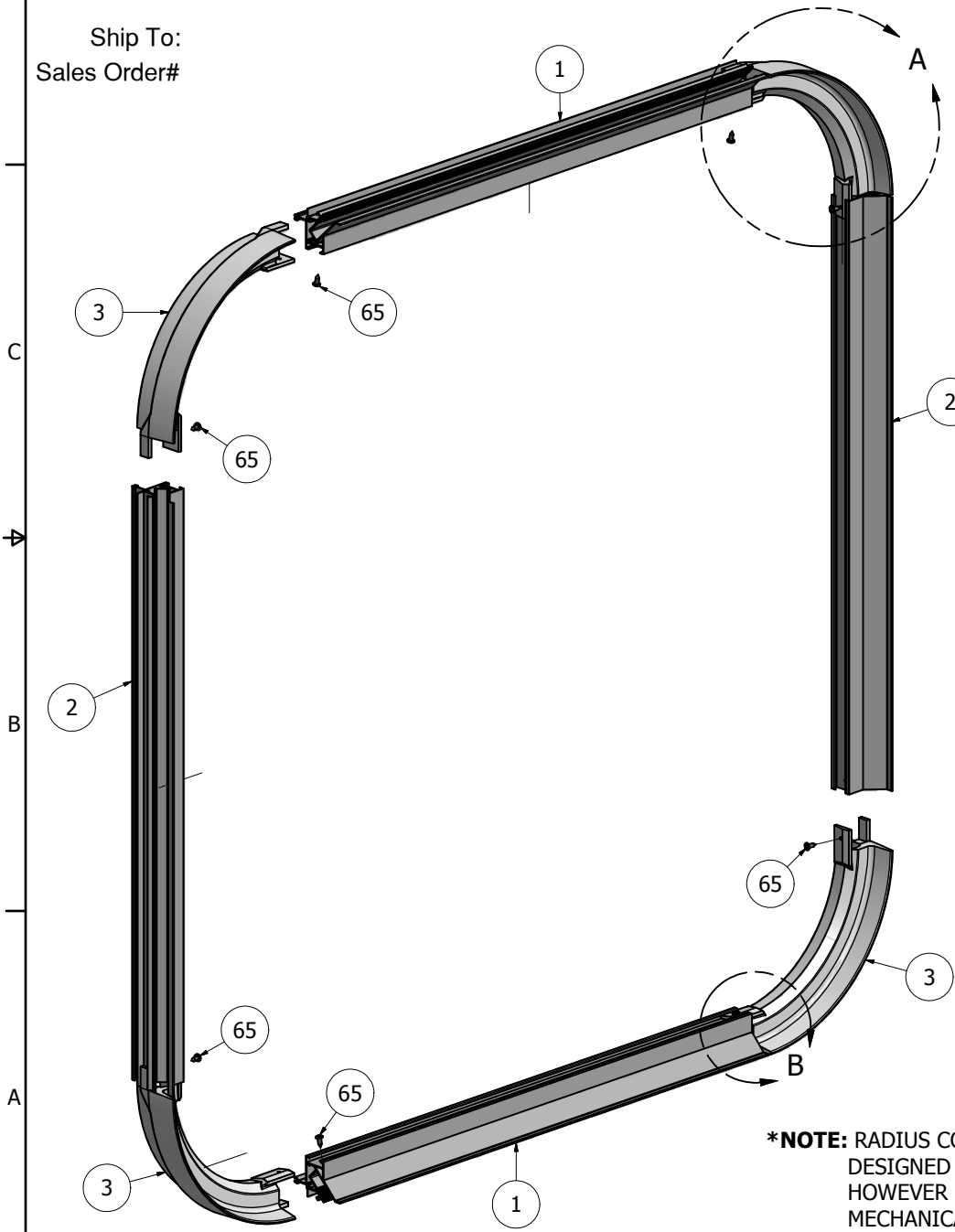
Wide Body w/ 9in Radius Corners - Assembly

**KWB-4100**



PARTS LIST			
ITEM	PART #	DESCRIPTION	NOTES
1	2085	Tension Frame	Top & Bottom
2	2085	Tension Frame	Sides
3	4240	9in Tension Frame Radius Corner	All 4 Corners
65	5218	Radius Corner Screw	Drill 5/32" pilot hole

Ship To:  
Sales Order#



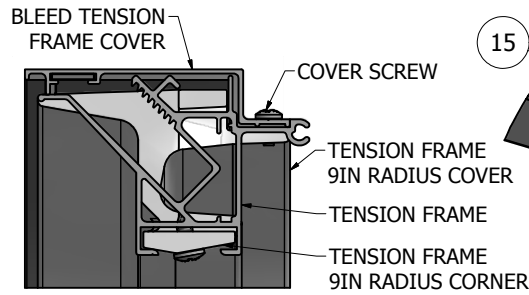
**\*NOTE:** GAPS ARE REQUIRED FOR PROPER ASSEMBLY.

**\*NOTE: PRE-CUT KITS ARE NOT PRE-DRILLED.**  
(Holes shown in this drawing are for reference only.  
Drilling of pilot holes are to be done by fabricator.)

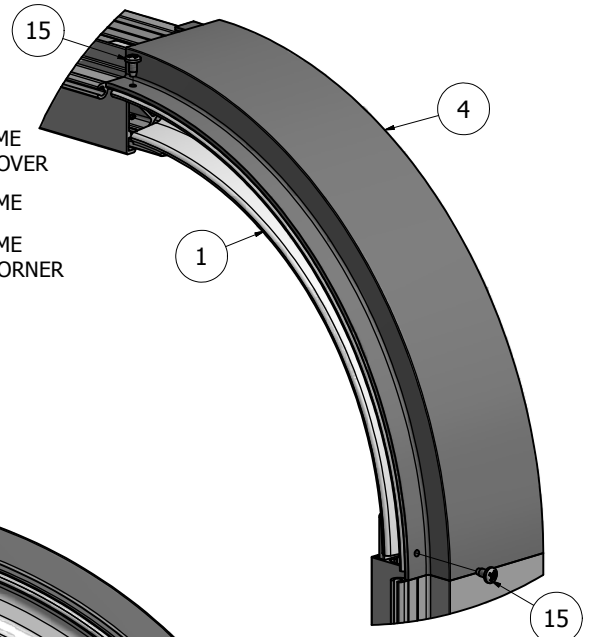
**\*NOTE:** RADIUS CORNERS ARE DESIGNED TO BE WELDED, HOWEVER CAN ALSO BE MECHANICALLY ASSEMBLED.

DRAWING BY: SBreihof		6/25/2013	<b>SignComp</b>
Centroid X:	0.000 in	TITLE	
Centroid Y:	0.000 in	Tension Frame with 9in Radius Corners - Assembly	
Principal Moments Ix:	0.000 in <sup>4</sup>	PART NO	REV
Principal Moments Iy:	0.000 in <sup>4</sup>	<b>K2085-4240</b>	
Section Modulus Ix:	0.000 in <sup>3</sup>		
Section Modulus Iy:	0.000 in <sup>3</sup>	SHEET 1 OF 1	

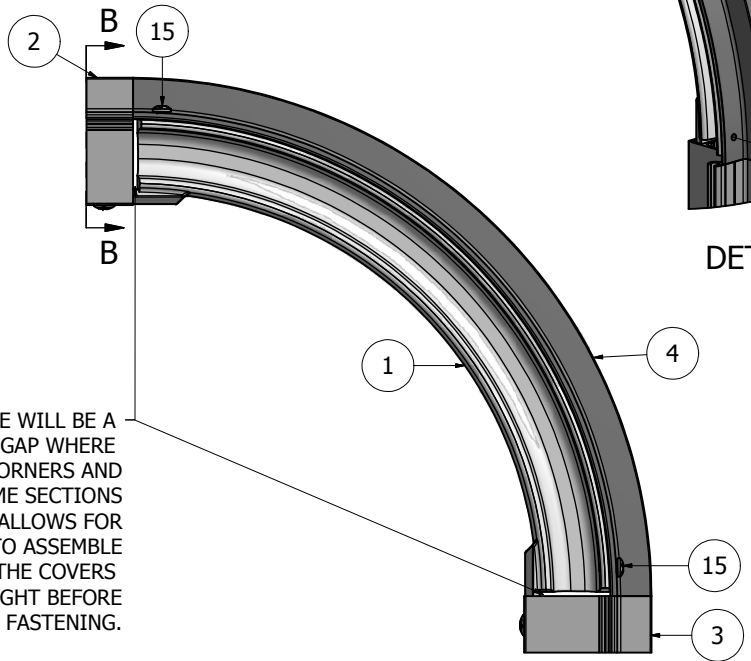
PARTS LIST			
ITEM	PART #	DESCRIPTION	NOTES
1	K2085/4240	Tension Frame w/ 9in Radius Corners	Assembly
2	2095	Bleed Tension Frame Cover	Top & Bottom
3	2095	Bleed Tension Frame Cover	Sides
4	4260P	9in Bleed Tension Frame Radius Cover	
12	5195	Cover Screw	Pre-drill 3/32" hole
15	5195	Radius Corner Cover Screw	Pre-drill 3/32" hole



CROSS-SECTION VIEW

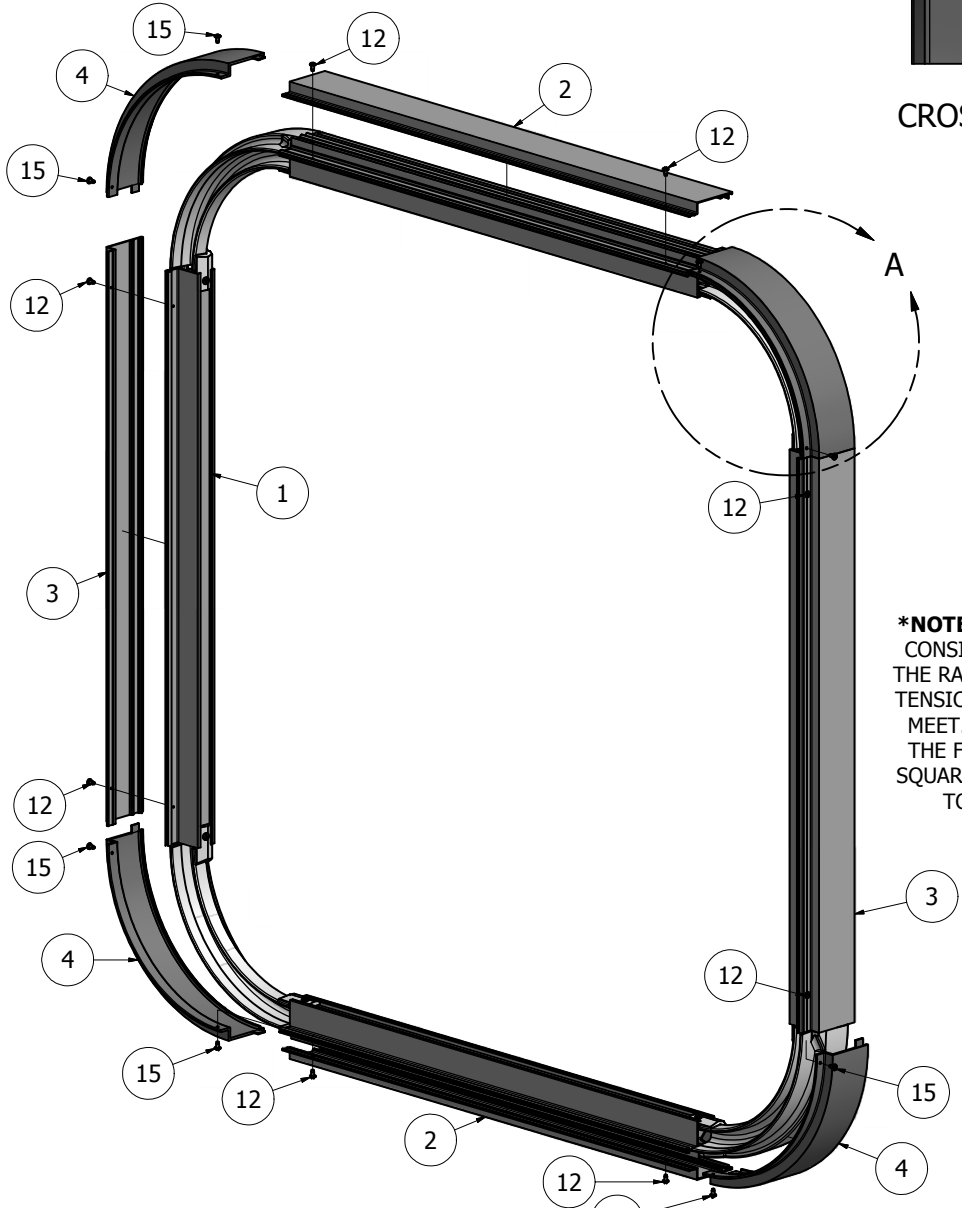


DETAIL A



DETAIL A-2  
BACK VIEW

**\*NOTE:** THERE WILL BE A CONSISTANT GAP WHERE THE RADIUS CORNERS AND TENSION FRAME SECTIONS MEET. THIS ALLOWS FOR THE FRAME TO ASSEMBLE SQUARE AND THE COVERS TO FIT TIGHT BEFORE FASTENING.



**NOTE: PRE-CUT KITS ARE NOT PRE-DRILLED.**  
(Holes shown in this drawing are for reference only. Drilling of pilot holes are to be done by fabricator.)

Ship To:  
Sales Order#

THIS DRAWING WAS CREATED AT NO CHARGE TO ASSIST YOU IN VISUALIZING OUR PROPOSAL. THE DRAWING HEREIN IS THE PROPERTY OF SIGNCOMP. PERMISSION TO COPY OR REVISE THIS DRAWING OR TO USE THIS DRAWING FOR PRODUCTION IS STRICTLY PROHIBITED AND CAN ONLY BE COPIED, REVISED OR USED FOR PRODUCTION WITH THE EXPRESSED WRITTEN PERMISSION OF SIGNCOMP.

DRAWING BY:	SBreihof	6/25/2013
Centroid X:	0.000 in	
Centroid Y:	0.000 in	
Principal Moments Ix:	0.000 in <sup>4</sup>	
Principal Moments Iy:	0.000 in <sup>4</sup>	
Section Modulus Ix:	0.000 in <sup>3</sup>	
Section Modulus Iy:	0.000 in <sup>3</sup>	

<b>SignComp</b>		TITLE
		Tension Frame and Bleed Tension Frame Cover w/ 9in Bleed Radius Corner Cover - Assembly
PART NO	<b>K2085-95-4260P</b>	REV
		SHEET 1 OF 1